

ecOptimized F-300 Type - MPP Heavylift

Vessel name	Built	IMO no.	Flag	Vessel name	Built	IMO no.	Flag
Pia	2007	9384318	Antigua & Barbuda	Frieda	2008	9435117	Antigua & Barbuda
Erik	2008	9435105	Antigua & Barbuda	Jannes	2009	9435129	Antigua & Barbuda

MAIN DATA

Vessel type	Multipurpose Heavylifter
Classification	GL + 100 A5 E3 G IW BWM + MC E3 AUT Strengthened for heavy cargoes, Equipped for the carriage of containers
GT/NT	9,620 / 4,260
Deadweight (summer)	12,780 mt
Max. draft (summer)	8.00 m
Length o.a.	138.50 m
Length between pp.	130.71 m
Breadth moulded	21.00 m
Depth to main deck	11.00 m
Height above keel	40.09 m
Max. Speed	15.0 knots
Fuel consumption	21.0 mt RMG 380 fuel per day at sea 2.5 mt MGO DMA per day in port without gear 3.0 mt MGO DMA per day in port with gear

HOLDS/HATCHES/CRANES

Cargo hold capacity	15,952 cbm / 563,340 cbft
Floor space under deck	2,810 sqm / 30,247 sqft
Floor space on deck	1,480 sqm / 15,931 sqft
Cranes	2 NMF cranes situated portside 150 mt capacity each / 300 mt capacity combined
Container intake	665 TEU nominal 528 TEU at 14 mt homogeneously loaded 50 reefer plugs on deck
Deck strengths per sqm	16.00 mt on tanktop 2.50 mt on tweendeck in hold 1 and hold 2 (upper position) 4.00 mt on tweendeck in hold 2 (middle and lower position) and hold 3 1.75 mt on hatchcovers

SPECIAL EQUIPMENT/FEATURES

Fitted for trading Great Lakes and Australia.
Fitted for carriage of dangerous goods of all IMO classes.

Becker Mewis Duct® RETROFITTED



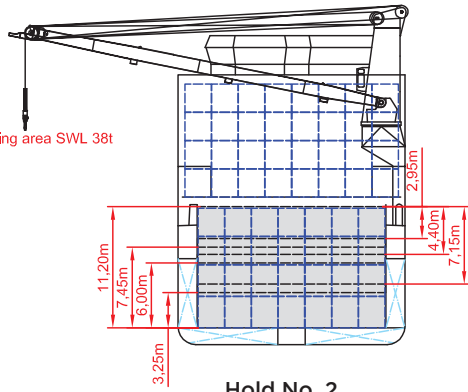
- Energy savings up to 8%
- Low SO_x and CO₂ emissions

Speed and consumption figures are calculated basis maximum Beaufort 2, no swell and no adverse currents. Consumption data assumes shaft generator and reefer plugs disconnected. Vessel is burning fuels according to ISO 8217-2012. Intake is always subject to vessel's stability, trim, permissible weights and is subject to regulations of visibility. Lifting capacity of vessel's cranes is subject to vessel's stability and can depend on cargo/ballast on board. Container data as well as bale capacity assumes tweendeck ashore. All details including speed and consumption are given in good faith and are „about“ and are given without guarantee.



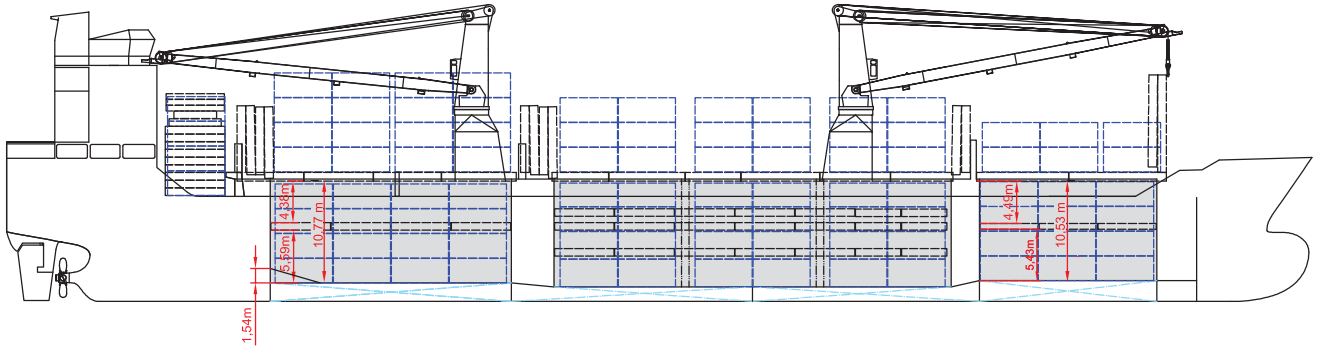
KREY SCHIFFFAHRT

Crane working area SWL 38t

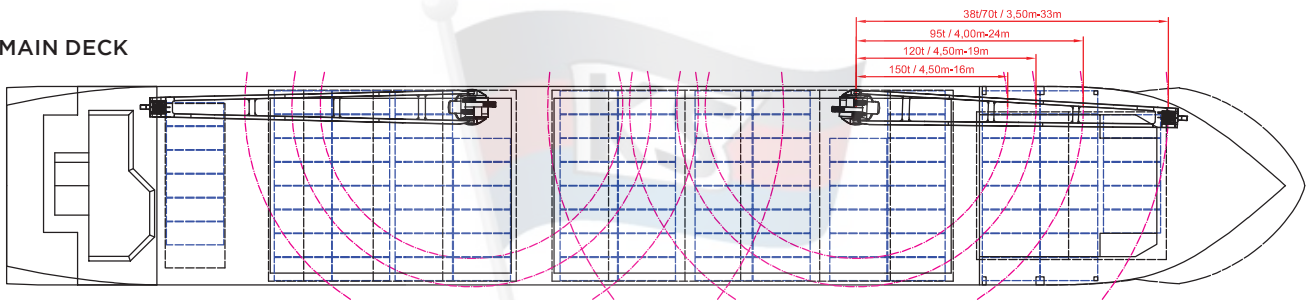


Hold No. 2

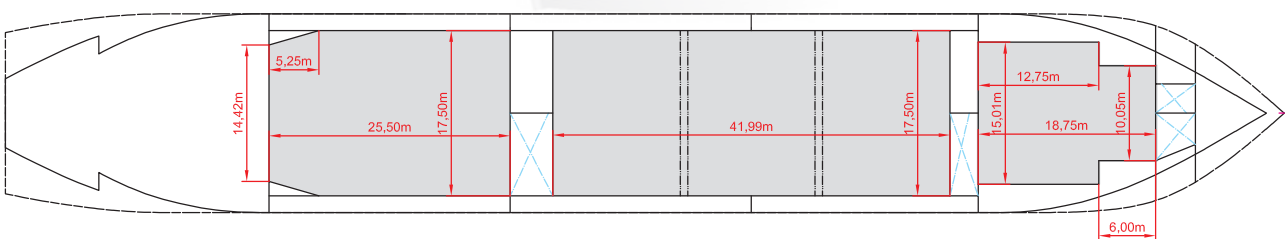
SIDE VIEW



MAIN DECK



TWEENDECK



HOLDS & DOUBLE BOTTOM

