



17.300 dwt. Type MPP ProjectCarrier

Vessel name	Built	IMO no.	Flag	Vessel name	Built	IMO no.
BBC Rio Grande	2008	9368326	Antigua & Barbuda	BBC Thames	2008	9368340

MAIN DATA

Vessel type	Multipurpose Tweendecker
Classification	GL + 100 A5 E3 NAV-O + MC E3 AUT strengthened for heavy cargoes, equipped for the carriage of containers, equipped for the carriage of dangerous goods
GT/NT	11,864 / 5,650
Deadweight (summer)	17,300 mt
Max. draft (summer)	9.69 m
Length o.a.	142.81 m
Length between pp.	133.26 m
Breadth moulded	21.50 m
Depth to main deck	13.30 m
Height above keel	40.90 m
Max. Speed	15.0 knots
Fuel consumption	26.0 mt RMG 380 fuel per day at sea 1.4 mt MGO DMA per day in port without gear 3.0 mt MGO DMA per day in port with gear

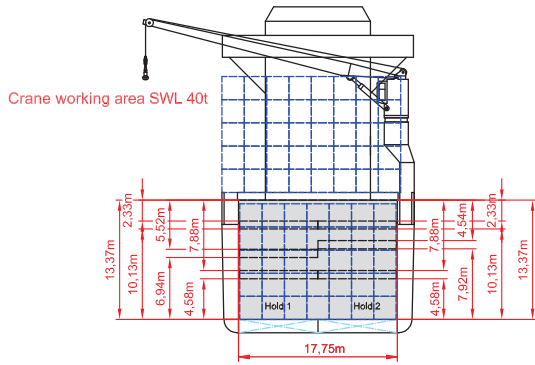
HOLDS/HATCHES/CRANES

Cargo hold capacity	20,041 cbm / 707,727 cbft
Floor space under deck	2,926 sqm / 31,495 sqft
Floor space on deck	1,562 sqm / 16,813 sqft
Cranes	3 Liebherr cranes situated portside 60 mt capacity each / 120 mt capacity combined
Container intake	962 TEU nominal 661 TEU at 14 mt homogeneously loaded
Deck strengths per sqm	20.00 mt on tanktop 4.00 mt on tweendeck 1.75 mt on hatchcovers

SPECIAL EQUIPMENT/FEATURES

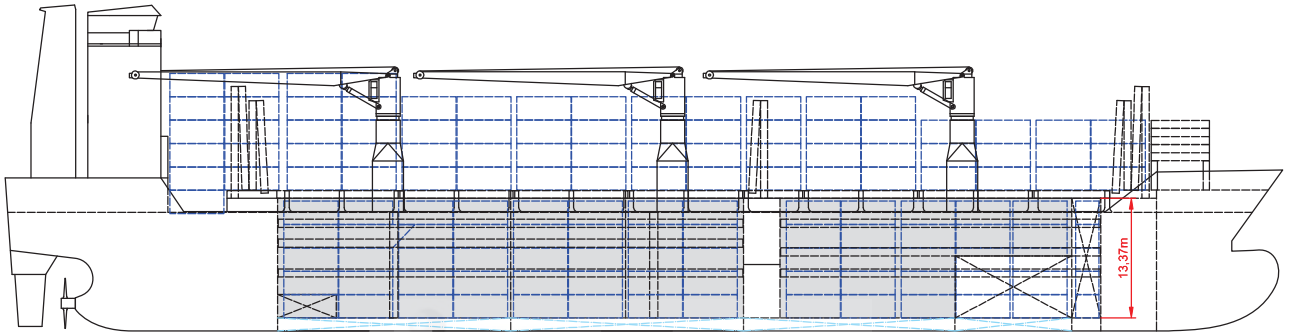
Fitted for trading Great Lakes and Australia.
Fitted for carriage of dangerous goods of all IMO classes.

Speed and consumption figures are calculated basis maximum Beaufort 2, no swell and no adverse currents. Consumption data assumes shaft generator and reefer plugs disconnected. Vessel is burning fuels according to ISO 8217-2012. Intake is always subject to vessel's stability, trim, permissible weights and is subject to regulations of visibility. Lifting capacity of vessel's cranes is subject to vessel's stability and can depend on cargo/ballast on board. Container data as well as bale capacity assumes tweendeck ashore. All details including speed and consumption are given in good faith and are „about“ and are given without guarantee.

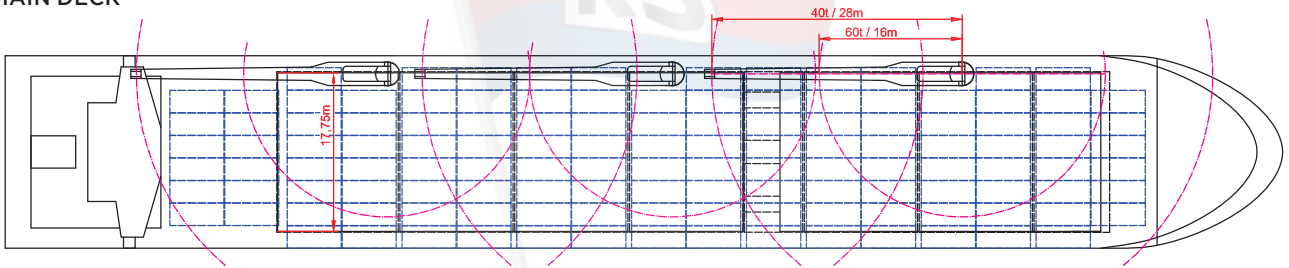


KREY SCHIFFAHRT

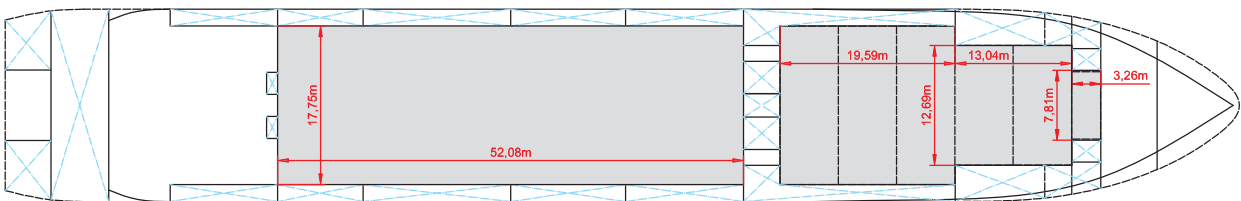
SIDE VIEW



MAIN DECK



TWEENDECK



HOLDS & DOUBLE BOTTOM

